

## CACTUS FLOWER 3C WARM COLOURWAY

BY COMMUNE

### SIZE

9'-0" x 12'-0" (2.74 x 3.66 m)

### WEAVE

Hand Knotted

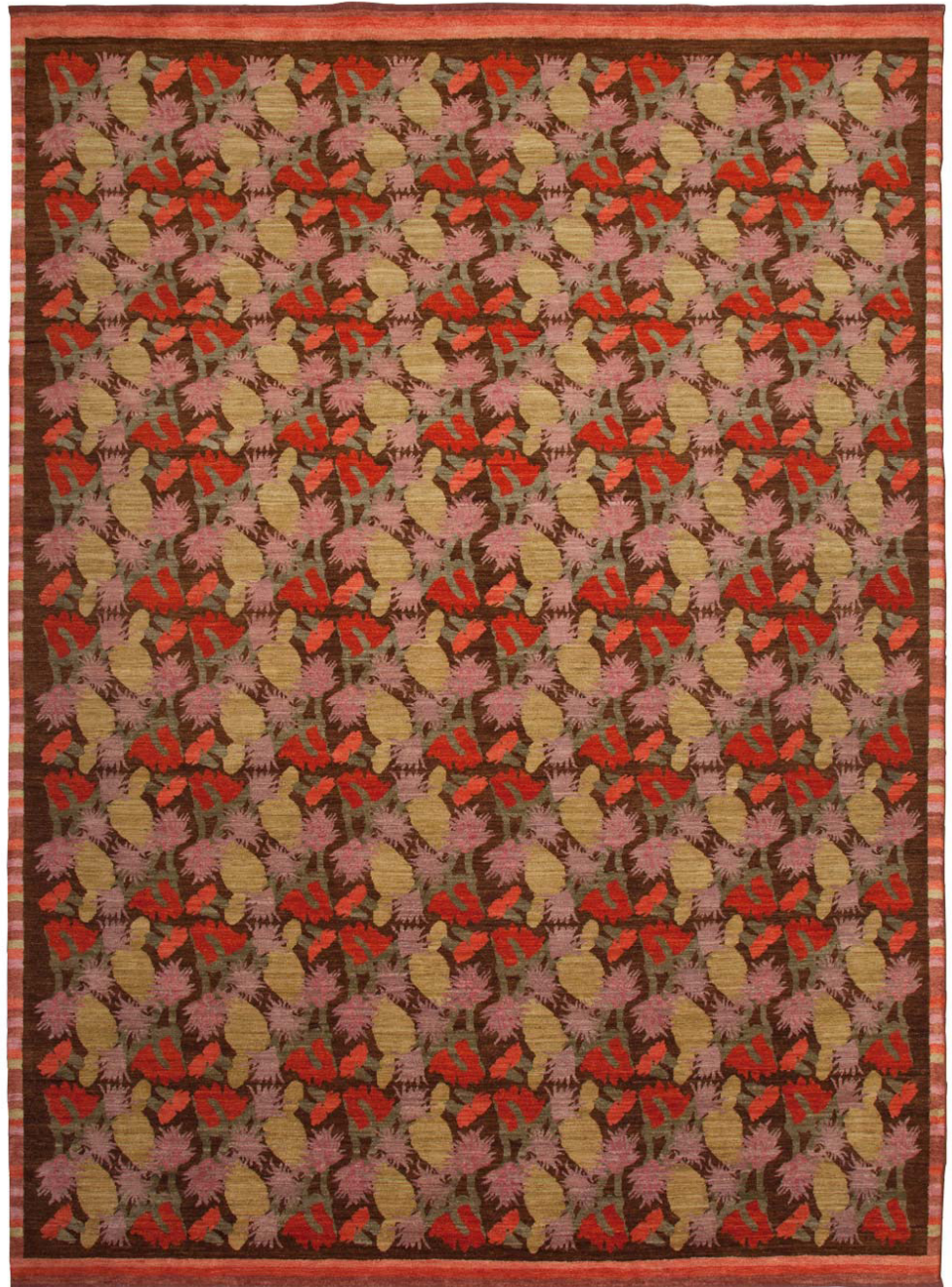
### MATERIALS

Handspun Wool and Silk

---

*Can be produced to colour, material, size and weave specifications.*

---



### LONDON

Unit 32-33 Chelsea Wharf  
15 Lots Road London SW10 0QJ  
Tel: 0207 349 0888  
info@cfarr.co.uk

### LOS ANGELES

748 N. La Cienega Boulevard  
Los Angeles CA 90069  
Tel: 310 967 0064  
info@christopherfarr.com