

## PENNY FALLS

KATE BLEE

### SIZE

1.46 x 2.13m (4'10" x 7')

### WEAVE

Hand Tufted

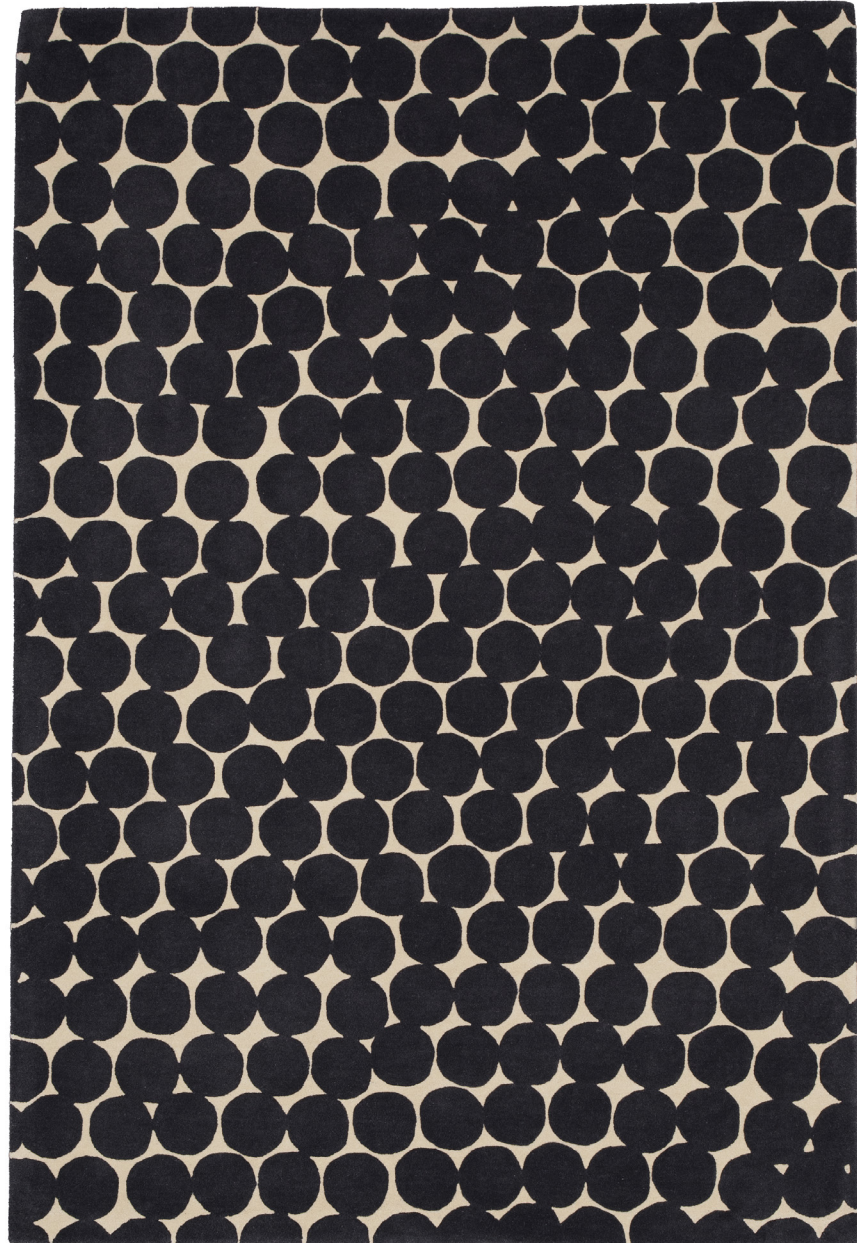
### MATERIALS

Handspun Wool

---

*All rugs are produced with the relevant institution estate or artist, closely involved in the whole process to ensure that the end result is as faithful to the original work as possible, the same as producing a limited edition print.*

---



### LONDON

Unit 32-33 Chelsea Wharf  
15 Lots Road London SW10 0QJ  
Tel: 0207 349 0888  
info@cfarr.co.uk

### LOS ANGELES

748 N. La Cienega Boulevard  
Los Angeles CA 90069  
Tel: 310 967 0064  
info@christopherfarr.com