

FULL, 1962

JOSEF ALBERS

SIZE

1.75M X 1.75M (5'74" X 5'75")

WEAVE

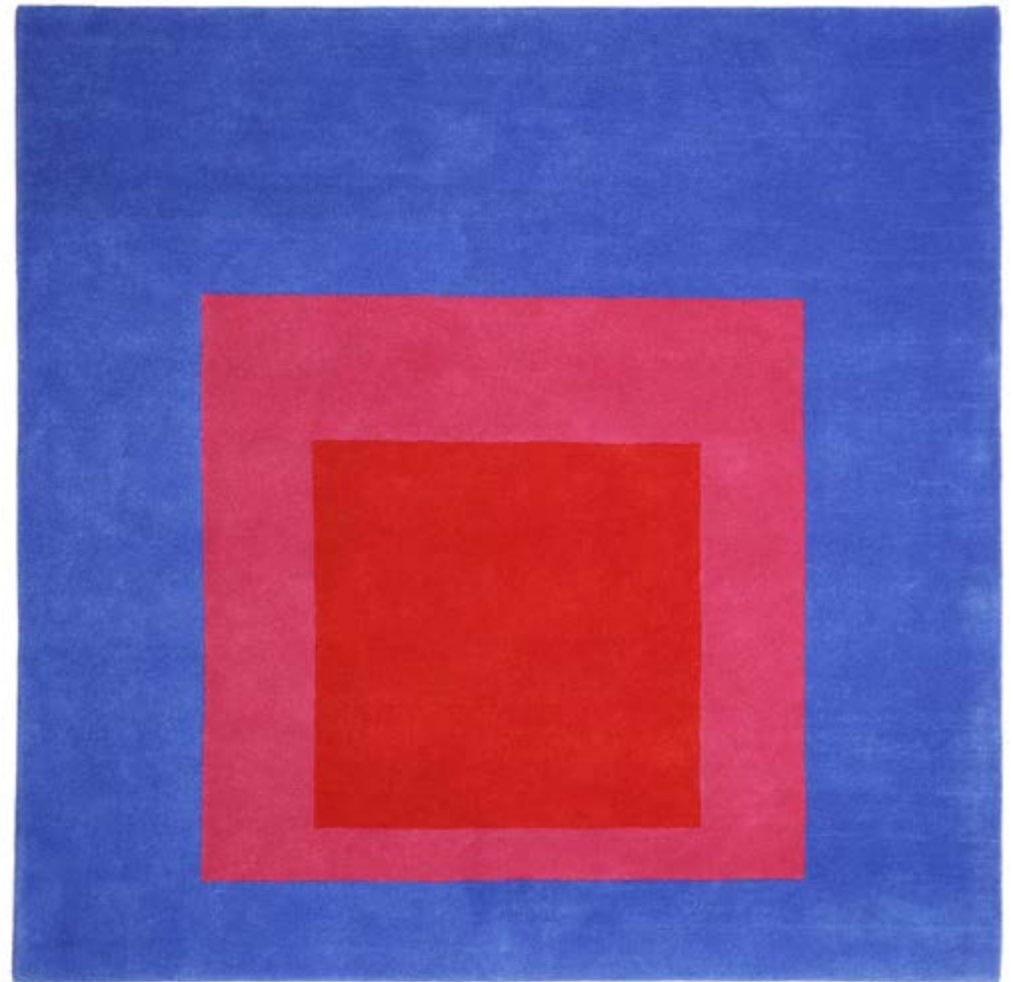
Hand Tufted

MATERIALS

Handspun Wool

From the portfolio Homage to the Square: Ten Works by Josef Albers. Produced in association with the Josef and Anni Albers Foundation

All rugs are produced with the relevant institution estate or artist, closely involved in the whole process to ensure that the end result is as faithful to the original work as possible, the same as producing a limited edition print.



LONDON

Unit 32-33 Chelsea Wharf
15 Lots Road London SW10 0QJ
Tel: 0207 349 0888
info@cfarr.co.uk

LOS ANGELES

748 N. La Cienega Boulevard
Los Angeles CA 90069
Tel: 310 967 0064
info@christopherfarr.com